



**\$189,990**

10005 SE 235th St  
Unit D202  
Kent, WA 98031

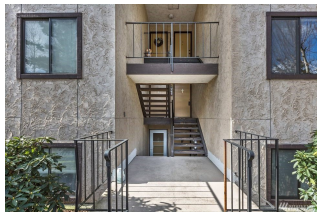
2 Bedrooms

2 Bathrooms

Built in 1981

View: Territorial

MLS # 1724869



**James White**

[JwWhite62@gmail.com](mailto:JwWhite62@gmail.com)

[jwhitesellshomes.com](http://jwhitesellshomes.com)

Cell: (253) 223-5265

Office: (253) 274-8981

This Condo is a Priced to sell! This is a Fantastic opportunity to own a 2 bedroom & 2 bathroom condo. This Condo features a lovely living room with wood burning fireplace, separate dining area, wonderful kitchen with all appliances, great master bedroom with walk-in closet and bath off master, utility area with stackable washer and dryer, serene balcony that overlooks the Condo Complex, storage unit, 2 assigned parking spaces. Conveniently located close to Kent station, shopping & HYW 167. Hurry! This is a great starter home or investment.

Listing provided by NWMLS & Hawkins Poe. The information contained herein has been obtained through sources deemed reliable but cannot be guaranteed as to its accuracy. Any information of special interest should be obtained through independent verification



**HAWKINS-POE**  
REAL ESTATE SERVICES | EST 1946

[hawkinspoe.com](http://hawkinspoe.com)

253.274.8981

[info@hawkinspoe.com](mailto:info@hawkinspoe.com)